



**Efficient Solutions – Quality Workmanship – Reliable Results**



**ELECTRICAL SERVICES**  
**Residential & Commercial**

**01634 711550**

[www.jnselectrical-buildingservices.co.uk](http://www.jnselectrical-buildingservices.co.uk)  
[info@jnselectrical.co.uk](mailto:info@jnselectrical.co.uk)



As an established company of electricians, JNS has been proudly serving the local community for over 20 years by focusing on what matters most to our customers.

When you need a job completed to meticulous standards while staying within budget, our approach ensures the highest levels of workmanship.

Our electricians are qualified, professional, and trained to recognised national standards.

We believe it's the simple things that set us apart – like carrying out site surveys at a time that suits

you, arriving when we say we will, offering a full initial consultation with design advice, completing work within the agreed timescale, delivering expert workmanship, and leaving your space clean and tidy when the job is done.

These are the things our customers expect – and they're exactly what we do best.



## Accreditations

⚡ NICEIC | Residential Installer

⚡ Electrical Safety Register

⚡ NICEIC | Approved Contractor

⚡ TrustMark

⚡ IPAF

⚡ GivEnergy | Approved Installer

Based in Rochester, we are perfectly located to serve the following areas:

Ashford | Maidstone | Sevenoaks | Tonbridge | Tunbridge Wells | Kent | Medway | London |  
Canterbury | Whitstable | South East



## **RESIDENTIAL SERVICES**

- Fuse boards
- Power
- Lighting
- Smart home systems
- Security systems
- Testing
- Solar panels
- EV car chargers

## **COMMERCIAL SERVICES**

- LV Distribution and supplies
- Small power
- Lighting
- Network and data
- Security systems
- Testing
- Solar panels
- EV car chargers



## FUSE BOARDS

- Compliance and regulations
- Installation
- Maintenance and upgrades
- Tests
- 18<sup>th</sup> Edition consumer unit
- RCBO's
- Surge protection
- New installs



## POWER

- Installation
- Maintenance
- Repairs
- Safety and compliance
- Upgrades
- Additions

## LIGHTING

- Ambient lighting
- Accent lighting
- Decorative lighting
- Outdoor/ exterior lighting
- Smart lighting
- Energy efficient lighting
- Speciality lighting



## SMART HOME SYSTEMS

- Lighting
- Thermostats
- Security
- Appliances
- Audio and visual
- Home hubs
- Blinds and shades
- Plugs
- Nest approved installer
- Home cinema



## SECURITY SYSTEMS

- Alarms
- CCTV
- Gate access

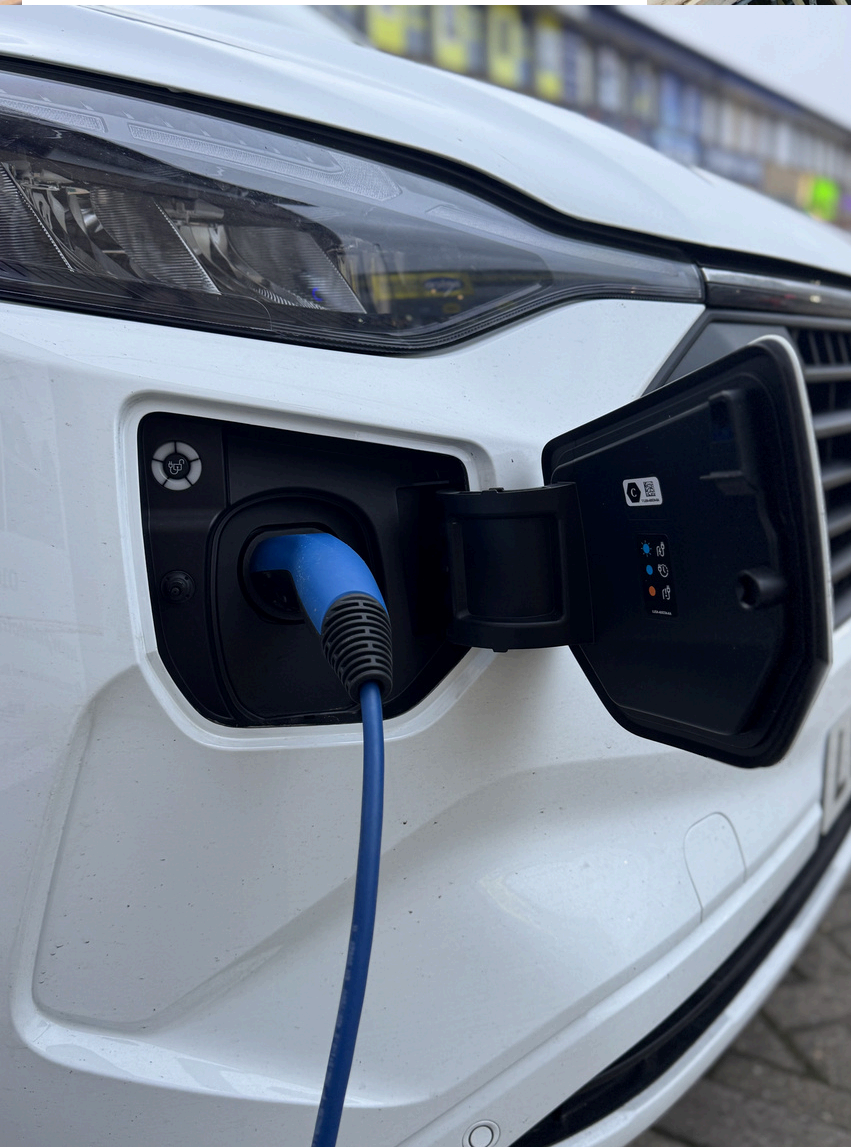
## TESTING

- Visual inspections
- Electrical continuity testing
- Polarity testing
- Earth fault loop impedance testing
- RCD testing
- Load test
- Voltage testing



## **SOLAR PANELS**

- **Assessment and initial consultation**
- **System design**
- **Permitting and approvals**
- **Installation**
- **System integration**
- **Inspection and commissioning**



## **EV CAR CHARGERS**

- **Assessment and planning**
- **Permitting**
- **Charger types**
- **Installations**
- **Inspection and testing**

## LV DISTRIBUTION AND SUPPLIES

- Designing and planning
- Installing
- Maintaining
- Upgrades

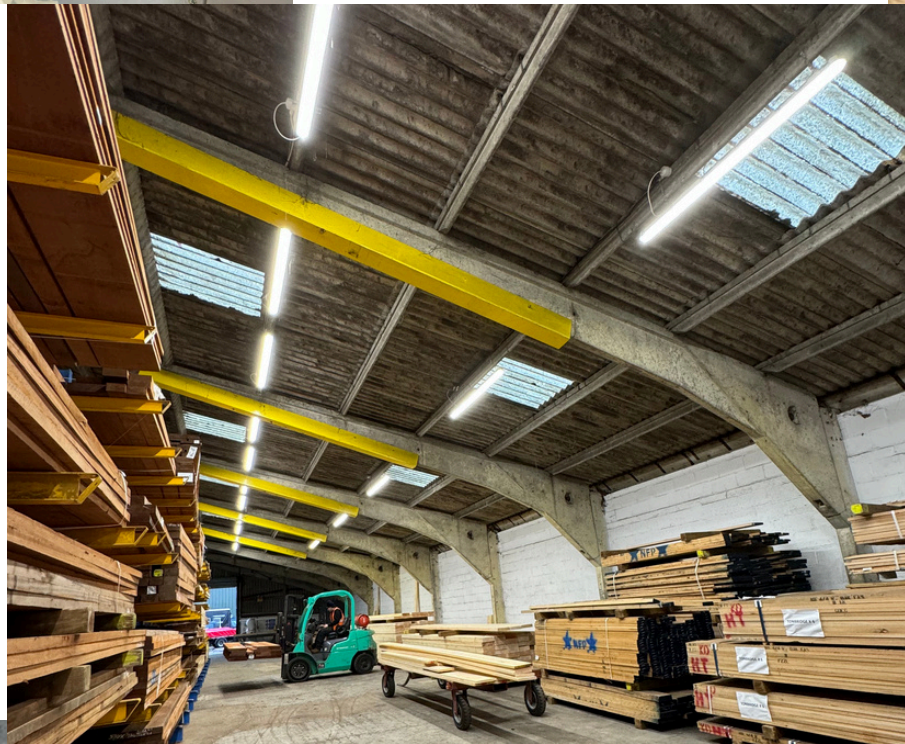


## SMALL POWER

- Designing
- Installing
- Maintaining
- Upgrades
- New Install

## LIGHTING

- Lighting design
- Lighting fixtures
- Lighting systems
- Lighting controls
- Compliance and sustainability
- Maintenance



## NETWORK AND DATA

- Design and planning
- Installation and construction
- Testing and certification
- Integration and commissioning
- Security and compliance
- Maintenance

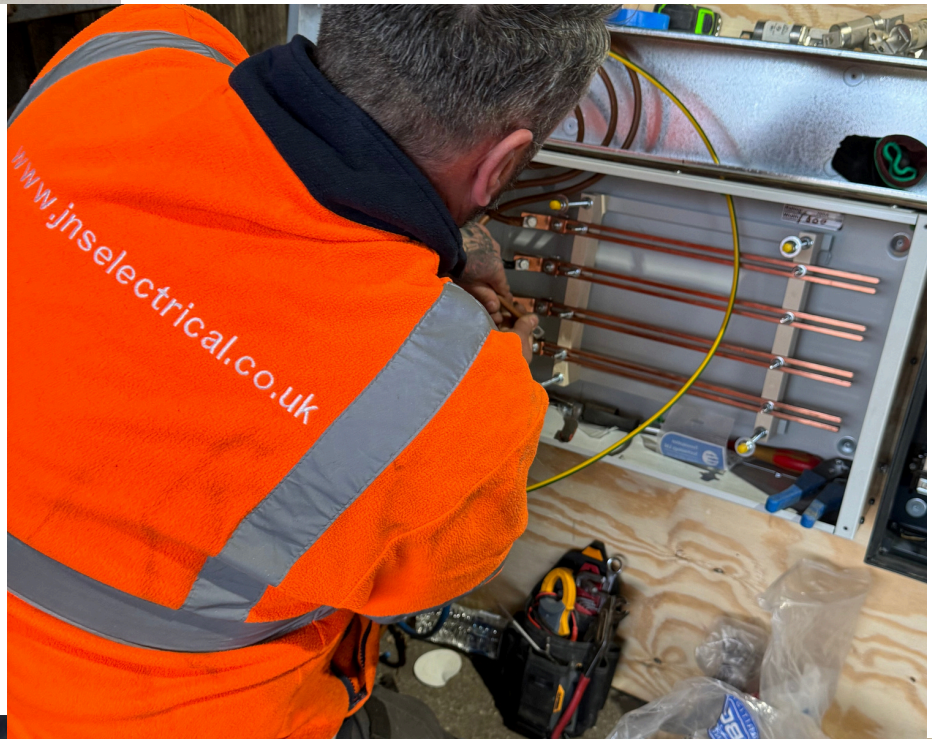


## SECURITY SYSTEMS

- Control systems
- Lighting
- CCTV
- Access control/ door entry
- Alarms/ Burglar/ Fire
- Emergency Lighting

## TESTING

- EICR
- Visual inspection
- Testing equipment
- Report and documentation
- Remedial works
- Fault finding



## SOLAR PANELS

- PV Panels
- Battery storage
- Assessment and planning
- System design
- Installation
- Testing and commissioning
- Certification
- Upgrades and expansions

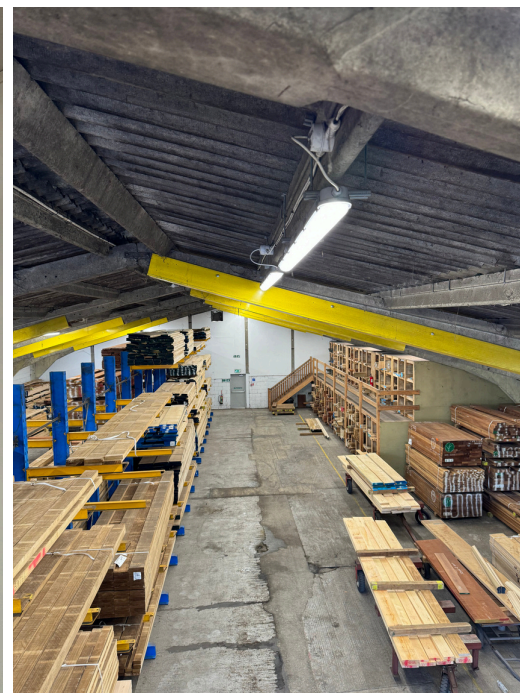


## EV CAR CHARGERS

- Assessment and planning
- Installation
- Inspection and testing
- Maintenance and repairs
- Upgrades



1. Large residential property in Sevenoaks, Kent – Full electrical installation including first and second fix throughout both the existing property and a major modern extension.
2. Countryside Property in Edenbridge, Kent – Electrical installation for a large, modern kitchen, including consumer unit upgrade and all necessary additions to accommodate new appliances, lighting, and power requirements.
3. 8-Bedroom Manor House in Tunbridge Wells, Kent – Full electrical strip-out followed by complete first and second fix, preparing the property for modern technology and smart systems.



1. Commercial Storage Unit in Ashford, Kent – Complete electrical setup including cable runs, ceiling grid installations, fuse board connections, and full lighting installation.
2. Office in Maidstone, Kent – Full first and second fix installation to accommodate a new mezzanine floor extension, including power, lighting, and data provisions throughout the expanded office space.
3. Commercial Timber Yard in Tonbridge, Kent – Installation of new 5ft LED lighting throughout the unit, providing bright, energy-efficient illumination across the workspace.



## Why our customers keep coming back !

At JNS, we believe that building lasting relationships with our customers is just as important as the work itself.

We know there are many electricians out there – but when you're looking to get a job done, no matter how big or small, you need a team you can trust. You want professionals who care about your home or business, who take pride in their work, and who treat every job like it matters. That's exactly how we work.

Our customers come back to us time and time again, not just because of the quality of our workmanship, but because they know we're committed to doing things right – with honesty, care, and value for money.

We're proud to have built a reputation based on trust, reliability, and consistent results.



“We have used JNS for many years. Excellent professional services provided at competitive rates. We would recommend JNS to anyone looking for a first class service”.



“Jon and his team of electricians are so reliable and efficient- he provided a detailed itemised quote, arranged for our job to be done in a timely manner. Would highly recommend to anyone”



“Many thanks to Jon and the entire team for their outstanding work from start to finish. Their professionalism and attention to detail truly stood out. The team worked efficiently, maintained excellent communication throughout the process and left the site impeccably clean and tidy. We're extremely pleased with the results and will definitely be returning for our next project. Highly recommended !”



**Electrical & Building Services Ltd**



**01634 711550**

**[www.jnselectrical-buildingservices.co.uk](http://www.jnselectrical-buildingservices.co.uk)**

**[info@jnselectrical.co.uk](mailto:info@jnselectrical.co.uk)**

Unit 8 Rochester Court, Anthony's Way,  
Medway City Estate, Rochester,  
Kent, ME2 4NW

